

ENDA O'DONOGHUE

THE LAST DAYS OF GRAVITY

LIMERICK CITY GALLERY OF ART

Solo exhibition November 2012 – January 2013



Deep Blue #1 to #6 (2012) Oil & Acrylic on Canvas, each 70 x 70 cm (27.6 x 27.6 in)



Deep Blue #1 to #6 (2012) Oil & Acrylic on Canvas, each 70 x 70 cm (27.6 x 27.6 in)



Deep Blue #1 to #6 (2012) Oil & Acrylic on Canvas, each 70 x 70 cm (27.6 x 27.6 in)
even prettier once it got dark (2012) Oil on Canvas, 180 x 240 cm (70.9 x 94.5 in)



even prettier once it got dark (2012) Oil on Canvas, 180 x 240 cm (70.9 x 94.5 in)



Crash Landings! (Spacestaken Kaz) (2012) Oil on Canvas, 50 x 60 cm (19.7 x 23.6 in)
Octopus (2012) Oil on Canvas, 180 x 240 cm (70.9 x 94.5 in)



Crash Landings! (Spacestaken Kaz) (2012) Oil on Canvas, 50 x 60 cm (19.7 x 23.6 in)
Octopus (2012) Oil on Canvas, 180 x 240 cm (70.9 x 94.5 in)



A fragment of the today's sky (2012) Oil on Canvas, 140 x 100 cm (55.1 x 39.4 in)



A fragment of the today's sky (2012) Oil on Canvas, 140 x 100 cm (55.1 x 39.4 in)
Discrete Cosine Transform (2012) Oil on Canvas, 30 x 30 cm (11.8 x 11.8 in)



Artificial Light (2012) Oil on Canvas, 180 x 240 cm (70.9 x 94.5 in)
A fragment of the today's sky (2012) Oil on Canvas, 140 x 100 cm (55.1 x 39.4 in)



Artificial Light (2012) Oil on Canvas, 180 x 240 cm (70.9 x 94.5 in)



Quantization #1, #2 & #3 (2012) Pigmented InkJet-Print on Alu-Dibond under Perspex, each 60 x 80 cm (23.6 x 31.5 in)



Quantization #1, #2 & #3 (2012) Pigmented InkJet-Print on Alu-Dibond under Perspex, each 60 x 80 cm (23.6 x 31.5 in)



Quantization #1 & #2 (2012) Pigmented InkJet-Print on Alu-Dibond under Perspex, each 60 x 80 cm (23.6 x 31.5 in)



Reno (2011) Oil on Canvas, 180 x 240 cm (70.9 x 94.5 in)
Fuzzy Memory (2012) Oil on Canvas, 70 x 95 cm (27.6 x 37.4 in)



Reno (2011) Oil on Canvas, 180 x 240 cm (70.9 x 94.5 in)



Fuzzy Memory (2012) Oil on Canvas, 70 x 95 cm (27.6 x 37.4 in)



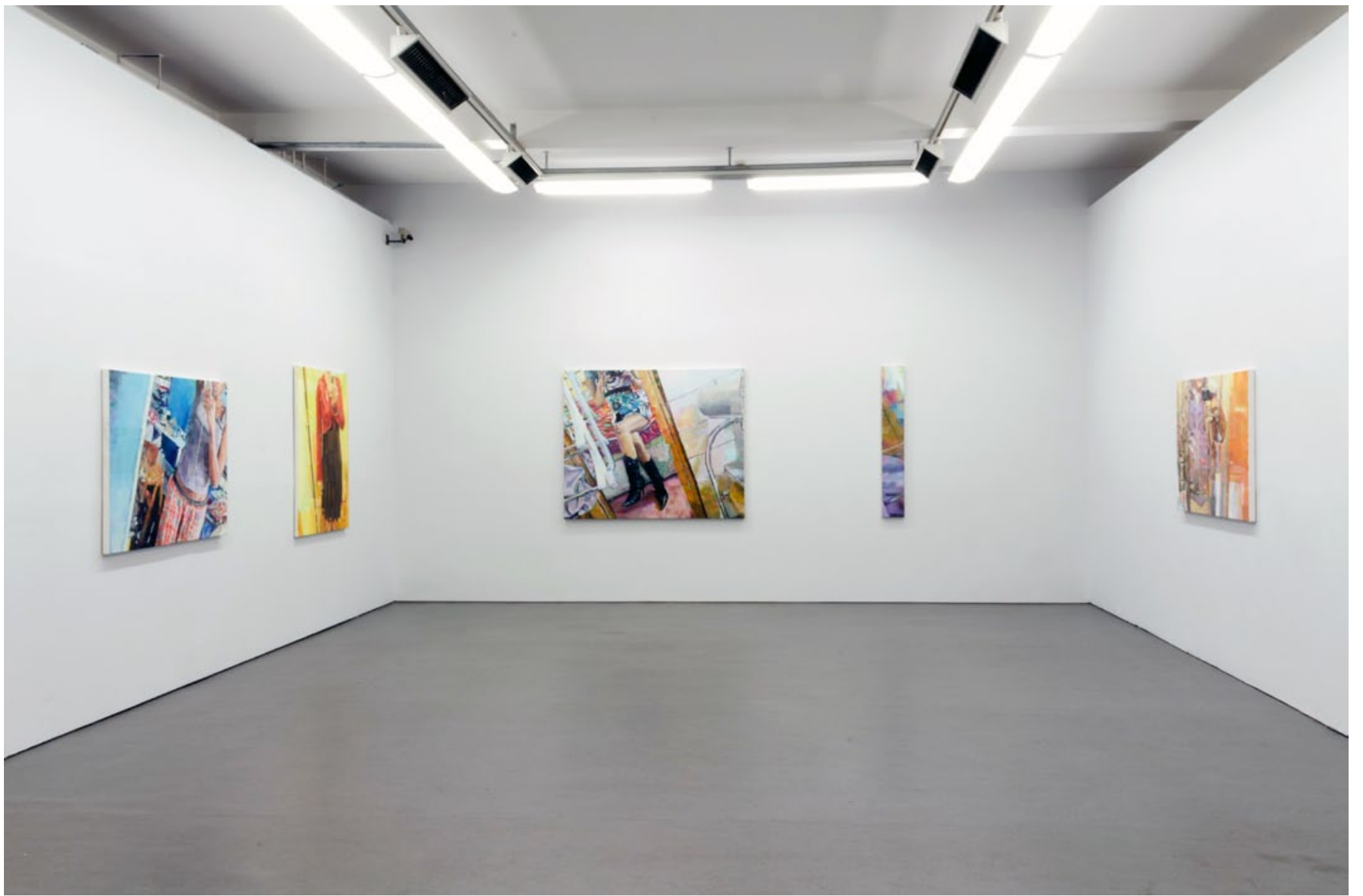
Black & White today (2011) Oil on Canvas, 12 canvases each 30 x 40 cm (11.8 x 15.7 in)
Fuzzy Memory (2012) Oil on Canvas, 70 x 95 cm (27.6 x 37.4 in)



Black & White today (2011) Oil on Canvas, 12 canvases each 30 x 40 cm (11.8 x 15.7 in)



Off Course Navigation (2006/2012) 4 channel video, 5min 02sec- looped, Colour, No Audio

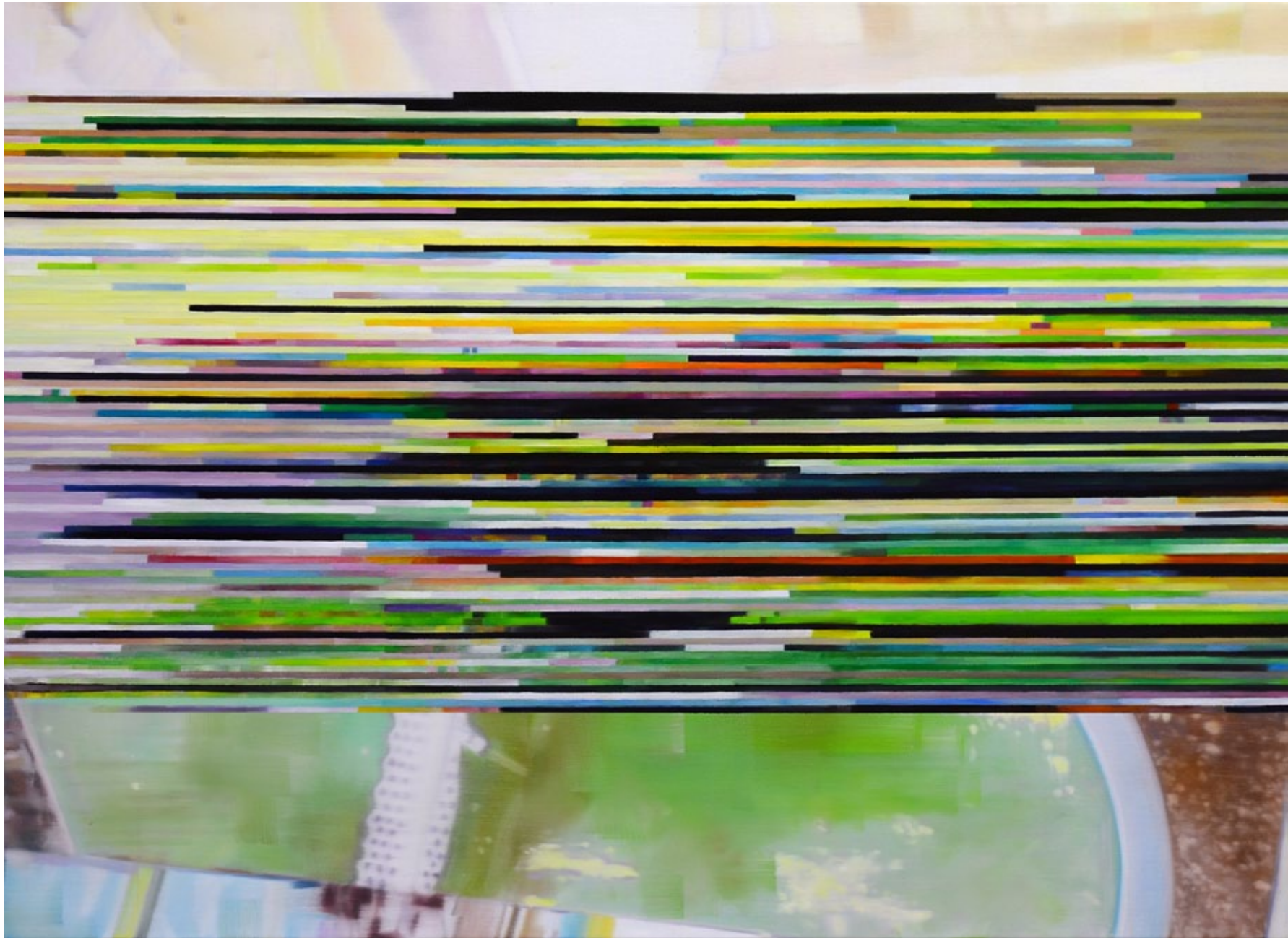




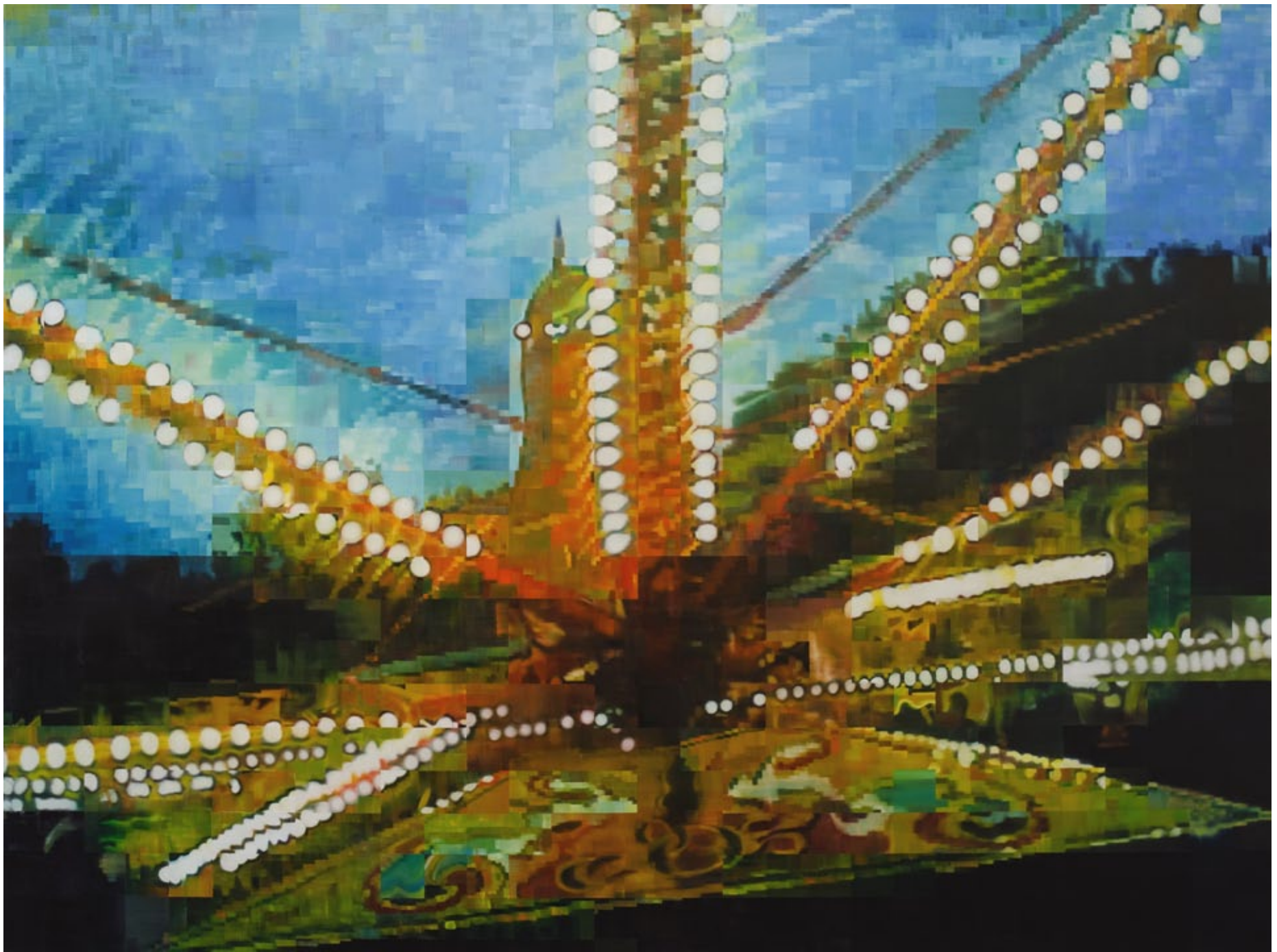
Ellipsis (2012) Oil on Canvas, 180 x 240 cm (70.9 x 94.5 in)



Reno (2011) Oil on Canvas, 180 x 240 cm (70.9 x 94.5 in)



Fuzzy Memory (2012) Oil on Canvas, 70 x 95 cm (27.6 x 37.4 in)



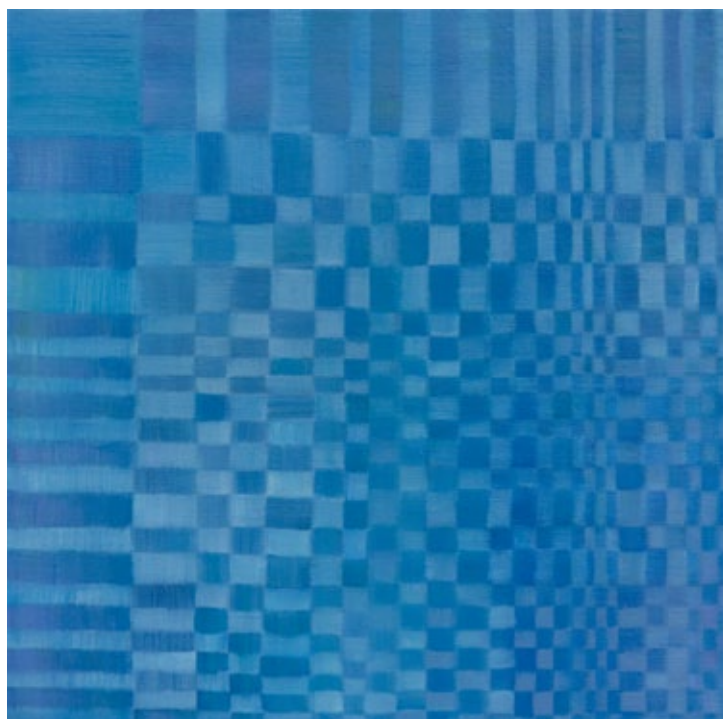
even prettier once it got dark (2012) Oil on Canvas, 180 x 240 cm (70.9 x 94.5 in)



Octopus (2012) Oil on Canvas, 180 x 240 cm (70.9 x 94.5 in)



A fragment of the today's sky (2012) Oil on Canvas, 140 x 100 cm (55.1 x 39.4 in)



Discrete Cosine Transform (2012) Oil on Canvas, 30 x 30 cm (11.8 x 11.8 in)



artificial light (2012) Oil on Canvas, 180 x 240 cm (70.9 x 94.5 in)



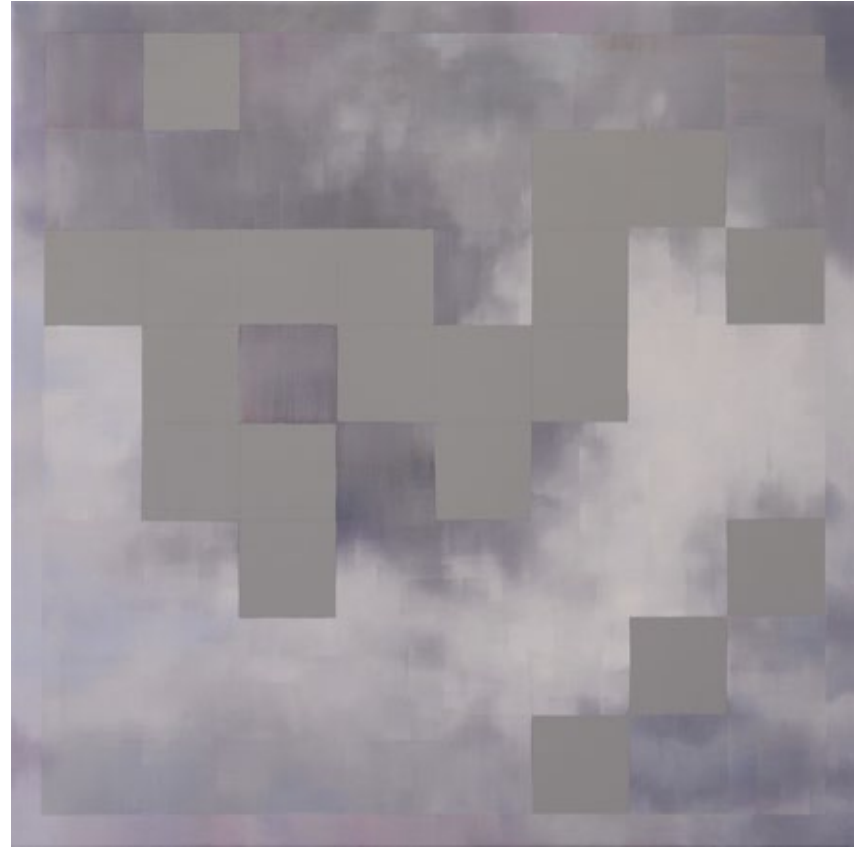
Quantization #1 (2012) Pigmented InkJet-Print on Alu-Dibond under Perspex, 60 x 80 cm (23.6 x 31.5 in)



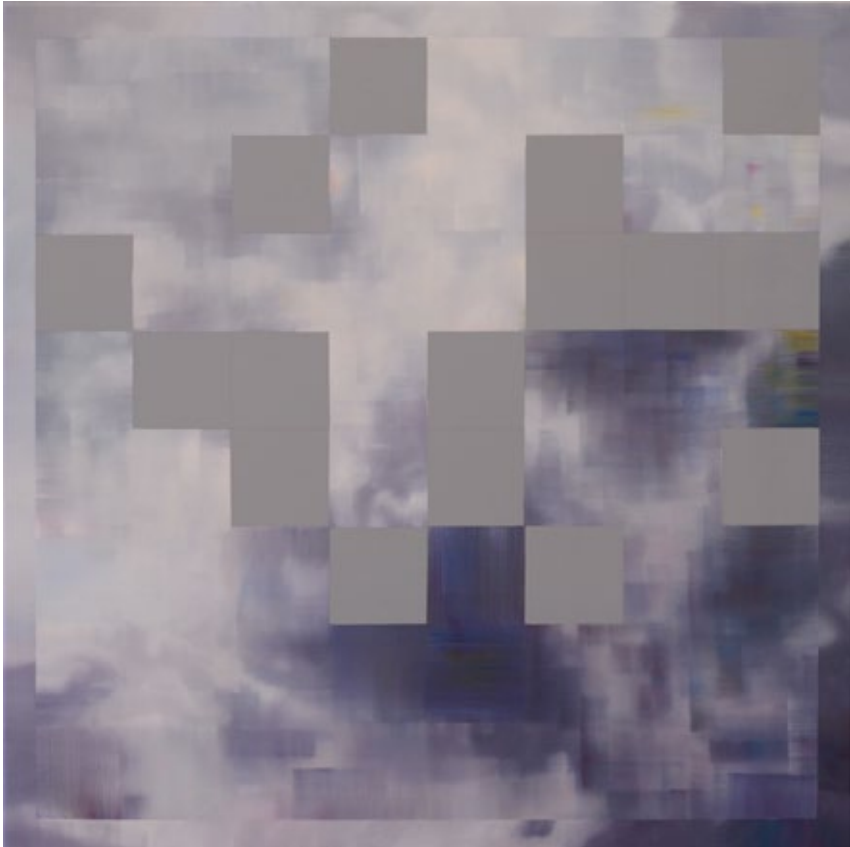
Quantization #2 (2012) Pigmented InkJet-Print on Alu-Dibond under Perspex, 60 x 80 cm (23.6 x 31.5 in)



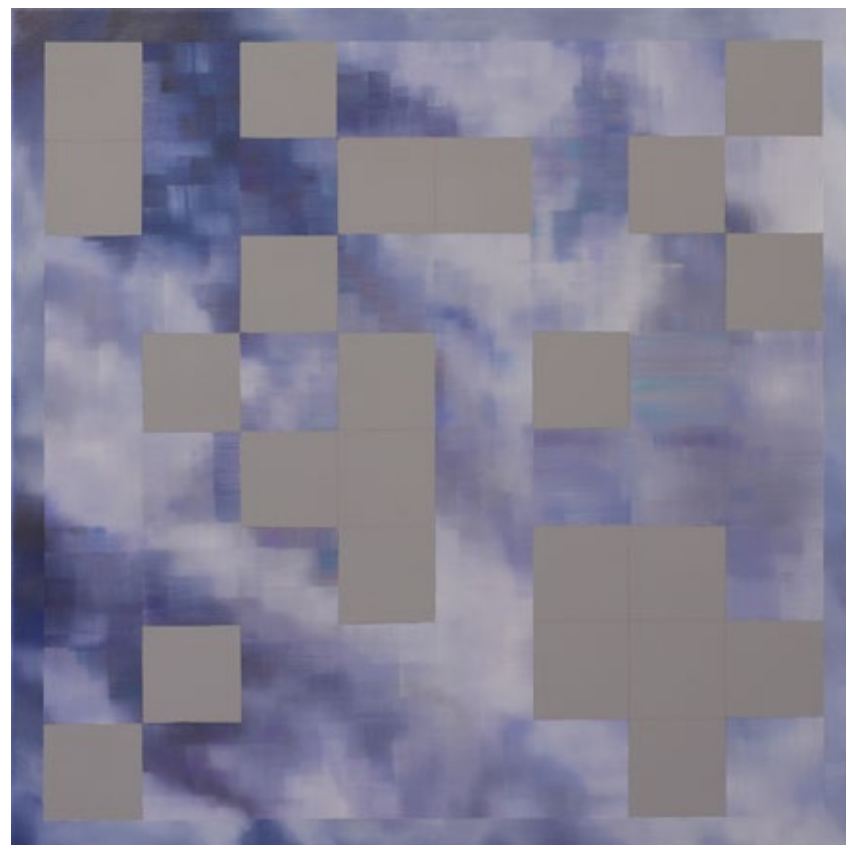
Quantization #3 (2012) Pigmented InkJet-Print on Alu-Dibond under Perspex, 60 x 80 cm (23.6 x 31.5 in)



Deep Blue #1 & #2 (2012) Oil & Acrylic on Canvas, each 70 x 70 cm (27.6 x 27.6 in)



Deep Blue #3 & #4 (2012) Oil & Acrylic on Canvas, each 70 x 70 cm (27.6 x 27.6 in)



Deep Blue #5 & #6 (2012) Oil & Acrylic on Canvas, each 70 x 70 cm (27.6 x 27.6 in)



Crash Landings! (Spacestaken Kaz) (2012) Oil on Canvas, 50 x 60 cm (19.7 x 23.6 in)



Ellipsis (2012) Oil on Canvas, 180 x 240 cm (70.9 x 94.5 in)

www.endaodonoghue.com